

# COCKPIT ENGINE INSTRUMENTATION



## BLACK HAWK

## H5900H-60 A/L

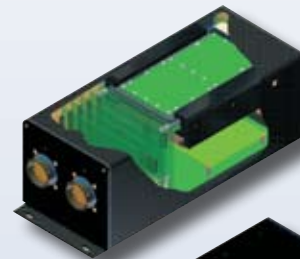
### Advanced Engine Instrumentation (AEI)

#### Real-Time Performance and Mission Management

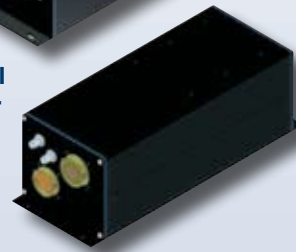
- Real-time torque available
- Dynamic hover and cruise torque targets
- Critical in and out-of-ground power settings
- Automated gross weight calculations within  $\pm 100$  lbs ( $\pm 45$  Kg)

#### Multi-Function Displays for Battlefield Management

- Dynamically updated load-carrying capacity
- Video inputs accommodate various battlefield systems such as TIS, digital map and video from unmanned aerial systems
- Mission management/LZ Planning data

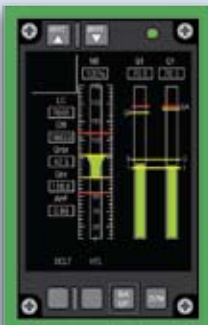


EDSC  
Enhanced Digital  
Source Collector



#### Multi-Function CDU

#### Multi-Function PDU



#### Multi-Function PDU



**Howell Instruments, Inc.**  
8945 South Freeway  
Fort Worth, Texas 76140  
[www.howellinst.com](http://www.howellinst.com)  
817-336-7411  
Fax: 817-336-7874  
[info@howellinst.com](mailto:info@howellinst.com)

# COCKPIT ENGINE INSTRUMENTATION



Howell's Advanced Engine Instrumentation for the Black Hawk enables immediate access to critical flight mission parameters and calculations for flight crews. This patented, ruggedized system is designed to be a form/fit/function replacement of the original PDU, CDU and SDC in a UH-60 A/L model helicopter.

- System Power: 28 VDC
- Qualified to: MIL-STD-461, MIL-STD-704, MIL-STD-810

## MFPDU

### Multi-Function Pilot Display Unit

The MFPDU provides all normal engine indications plus:

- Single or dual torque available and torque reserve (torque available minus OGE)
- Max load capacity
- Dynamic gross weight
- Real-time performance data
- One engine inoperative data
- Declutter modes

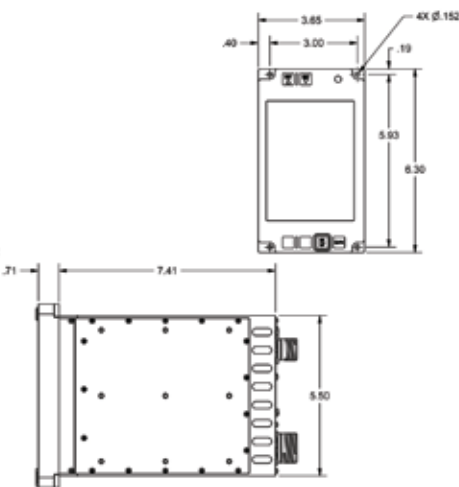
#### COMMUNICATIONS:

- EIA-422
- Digital Visual Interface

#### DISPLAY:

- AMLCD
- $\pm 45^\circ$  Horizontal Viewing Angle
- $\pm 20^\circ$  Vertical Viewing Angle

#### NVG COMPATIBLE



## MFCDU

### Multi-Function Central Display Unit

The MFCDU provides all normal engine indications plus:

- Digital map view capability
- FLIR or TVS capability
- Maintenance and mission planning data
- Downloadable maintenance data

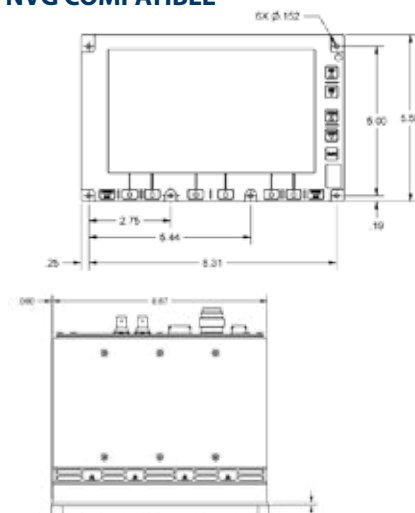
#### INTERFACES:

- 10/100 Base-T Ethernet
- USB 2.0
- MIL-STD-1553BC
- RS-170A
- RS-343

#### DISPLAY:

- AMLCD
- $\pm 45^\circ$  Horizontal Viewing Angle
- $\pm 20^\circ$  Vertical Viewing Angle

#### NVG COMPATIBLE



## EDSC

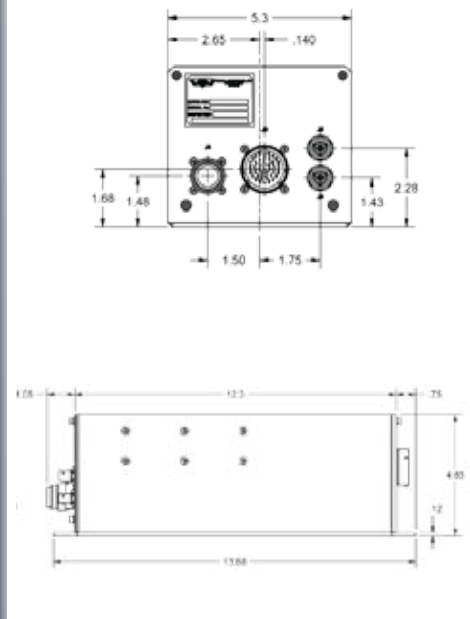
### Enhanced Digital Source Collector

The EDSC provides:

- Real-time performance planning
- Real-time engine health

#### INTERFACES:

- 10/100 Base-T Ethernet
- USB 2.0
- EIA-422
- ARINC 429 RX-TX
- MIL-STD-1553RT
- Digital Visual Interface



Howell Instruments, Inc. • 8945 South Freeway • Fort Worth, Texas 76140  
 www.howellinst.com • 817-336-7411 • Fax: 817-336-7874 • info@howellinst.com